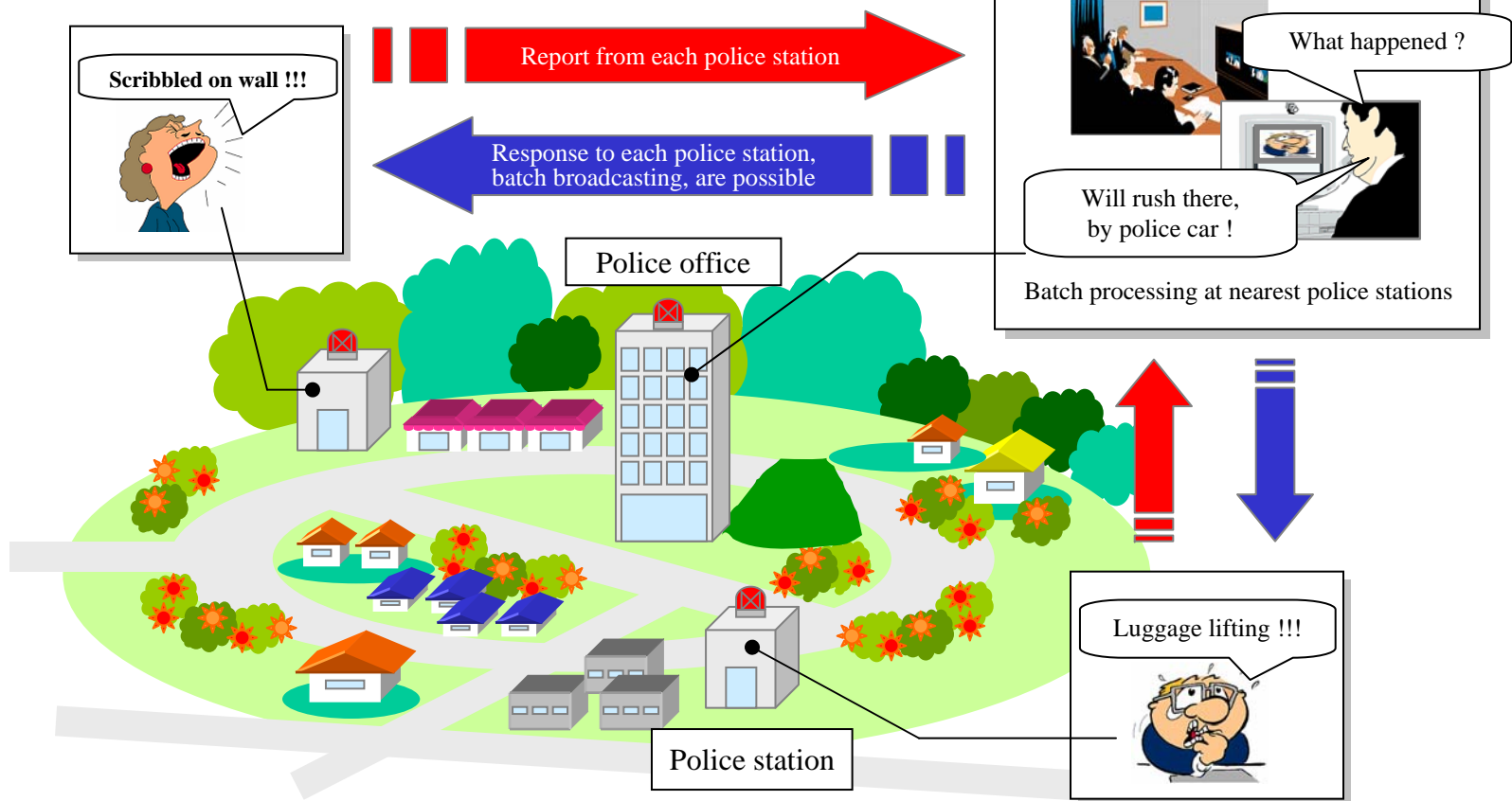


## Emergency reporting system for unattended police station

Batch processing of queries from multiple police stations, at one control center, is possible

Connect each police station and police office through internet or dedicated line



[Remarks]

The application examples published herein, are intended as hints for users for studying potential applications.

Neither guaranteeing the performance nor granting license. Copying or modifying whole or part of the articles shown herein without our prior approval is prohibited by copyright.

- \* Enables video / bi-directional communication between 2 sets “LsBox”

Possible to more precise understanding of real status through video image (possible between communication box, too)

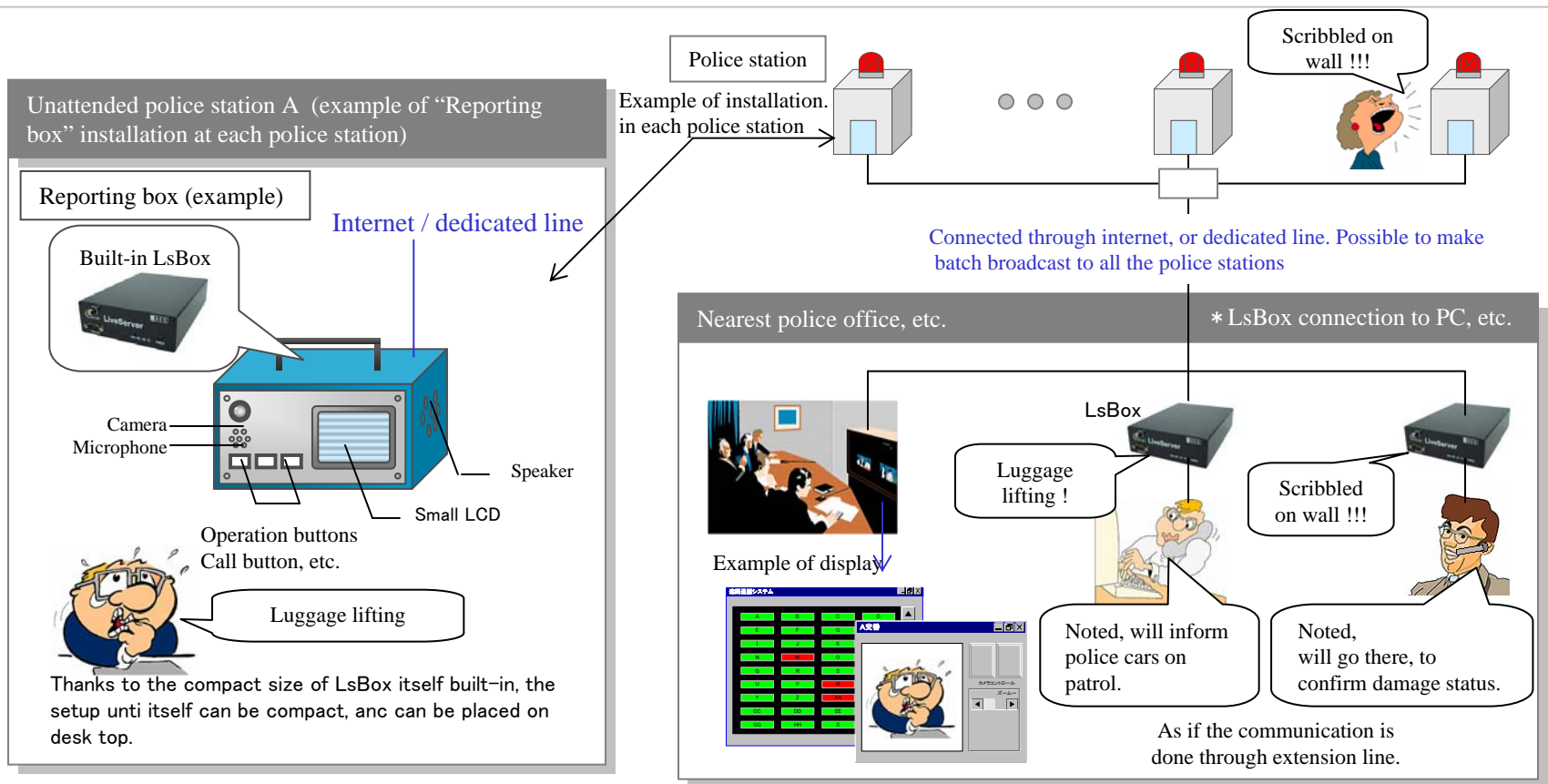
Possible to respond to the communication with “Reporting box” at unattended police station, with PC software.

Also possible to transfer PC camera image of reception PC, to “Reporting box”.

- \* Own compression method KAM, is very compact in data size, compared with that of other general compression technology like MPEG, and reduces the load on transfer line.

Dedicated display software is necessary, but good for security.

- \* On/Off of electronic lock and On/Off of lighting/alarm switch, etc. are possible on software display.



This is a basic system, possible to customize according to requirements