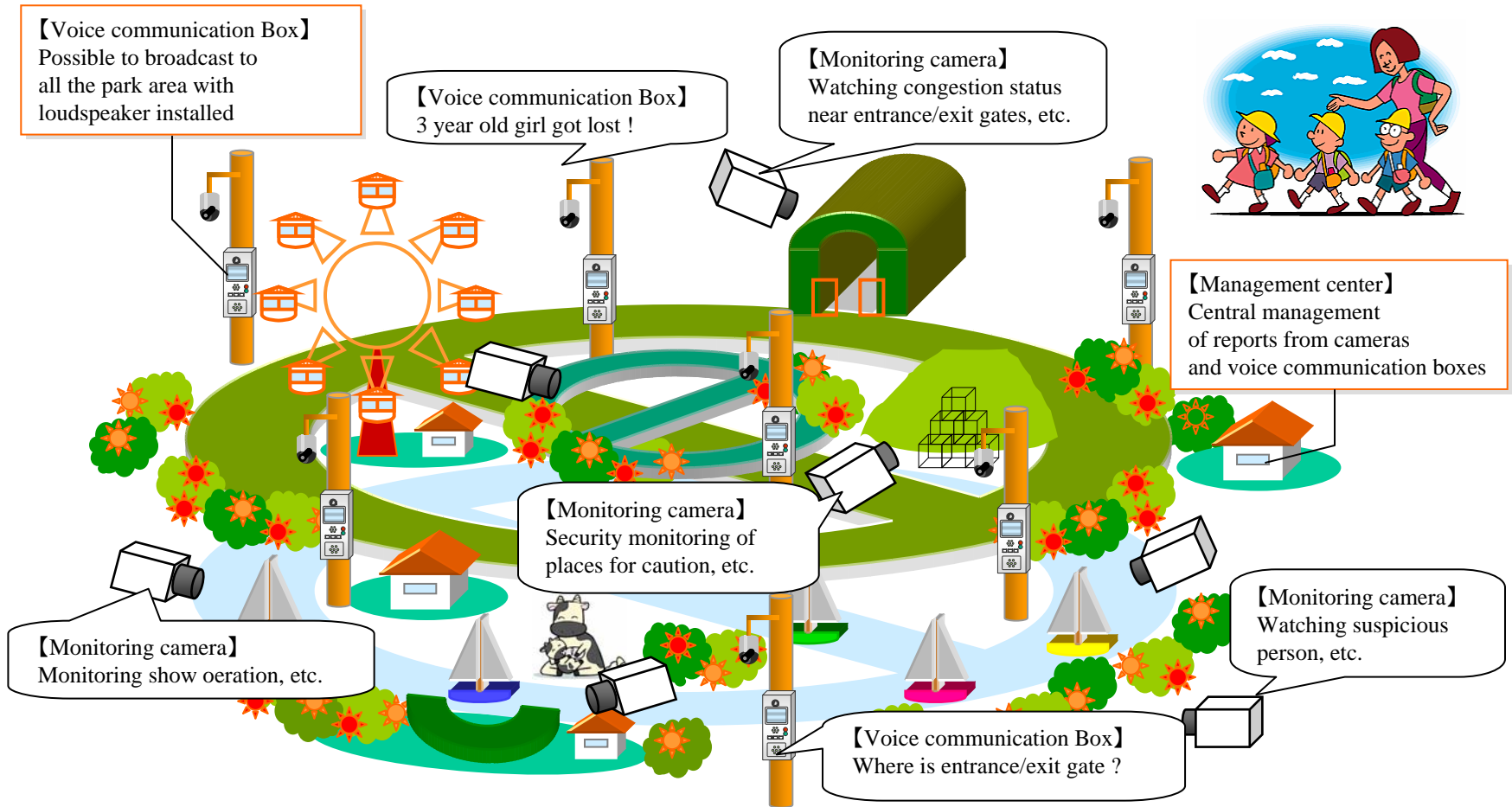


Security monitoring system for theme park

Capable of total services including security monitoring, stray child reporting, guiding within park area by the reports through videos from each camera placed, and “voice communication LsBox”



[Remarks]

The application examples published herein, are intended as hints for users for studying potential applications.

Neither guaranteeing the performance nor granting license. Copying or modifying whole or part of the articles shown herein without our prior approval is prohibited by copyright.

- * Capable of central responding at management center, etc. to videos through monitoring cameras installed within the park, reports from multiple sites
- * Capable of bi-directional video/voice communication through 2 units of “LsBoxes”, and utilized for emergency actions, effectively
Due to realtime video, more accurate understanding of status is possible
Applicable to broadcasting to all the park areas, and alarming, with addition of loudspeaker to “Communication Box”
- * Our own compression format : KAM is very small in data size compared with other compression technology like MPEG, etc.
and possible to reduce stresses on lines, at file transferring. Requires dedicated playback software, but contributes to security.
- * Easy to capture, playback and save, due to PC operation, basically.
Requires dedicated playback software, but contributes to security enhancement, effectively.

